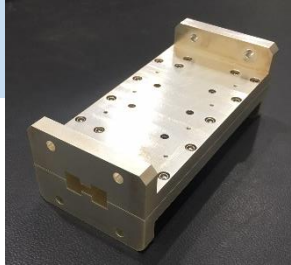


Part No:

# BSF-W-00053

## WRD750 Band-stop Filter



BSF-W-00053 is a WRD750 Band-stop Filter with a very wide pass-band and no spurious modes showing up. It is an 8 section filter with  $<0.4\text{dB}$  insertion loss at the high end and very good return loss across the entire pass-band.

### Key Features

- No spurious modes in the pass-band
- Low Insertion loss

Parameters	
Pass-Band Frequency	7-18 GHz
Insertion Loss	$<0.4\text{dB}$
Return Loss	$>21\text{dB}$
Rejection @ 8.836-9.107 GHz	$>45\text{dB}$
Operating Temperature	$-50^{\circ}\text{C}$ to $+85^{\circ}\text{C}$
Material	Silver Plated Aluminum 6061
Weight	200 grams

### Typical Measured Data

